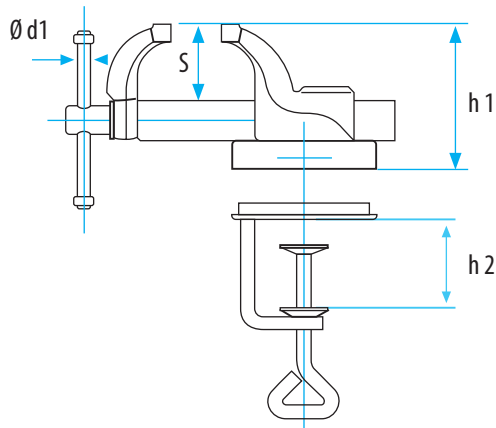
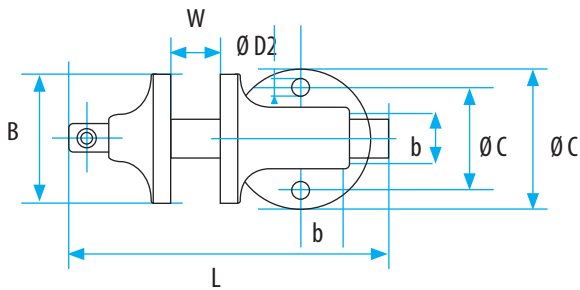
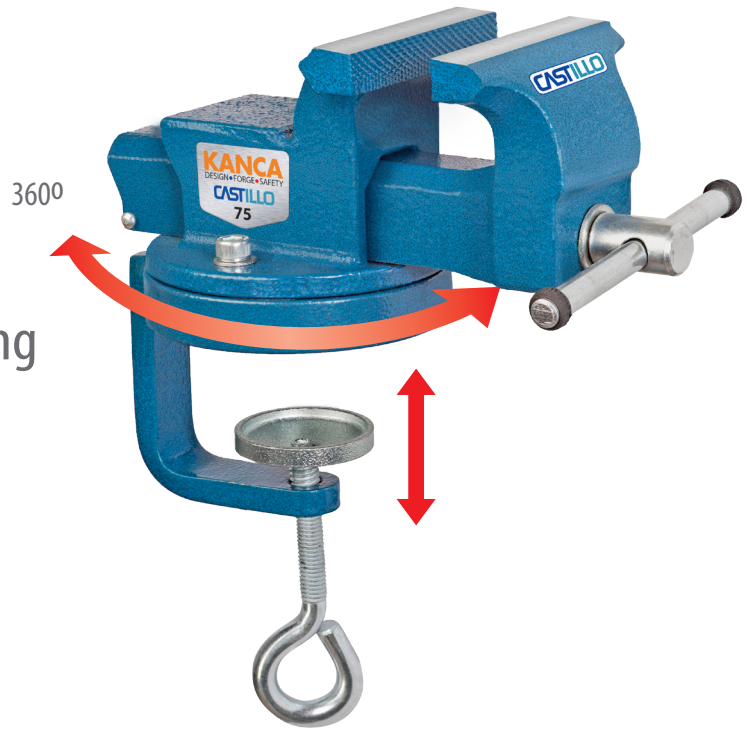




Finemechanic's Vise / Sfero Casting

All-steel, drop forged construction for precision parallel clamping. For the professional and the quality-conscious hobbyist. Facilitates many work in all mechanical and electronic workshops.



| SIZE | | FM-50 | FM-75 |
|----------------|--------------|------------|------------|
| Size | | 2" | 3" |
| Jaw Width | B (inch) | 2" | 3" |
| Jaw Opening | W (inch) | 1" | 1.5" |
| Length | L (inch) | 5.5" | 6.5" |
| Anvil Size | axb (inch) | .78 x .94" | .98 x 1.1" |
| Base Diameter | C (inch) | 2.5" | 3.5" |
| Hole Distance | Ø D1 (inch) | 1.5" | 2" |
| Hole Diameter | Ø D2 (inch) | .19" | .27" |
| Spindlescrew | Ø d1 (inch) | .23" | .31" |
| Depth | S min (inch) | 1.3" | 1.6" |
| Vise Height | H 1 (inch) | 2" | 2.5" |
| Clamping Bench | H 2 (inch) | 1.5" | 1.5" |
| Weight | lbs. | 2.2 | 3.9 |

Ideal for use by model makers and DIY enthusiasts

- High-grade hardened and tempered jaws
- Die-forged rearjaws with small anvil
- Maximum durability even for increased power work
- Can be swivelled for 360°, thereby optimal operating angle possible

