

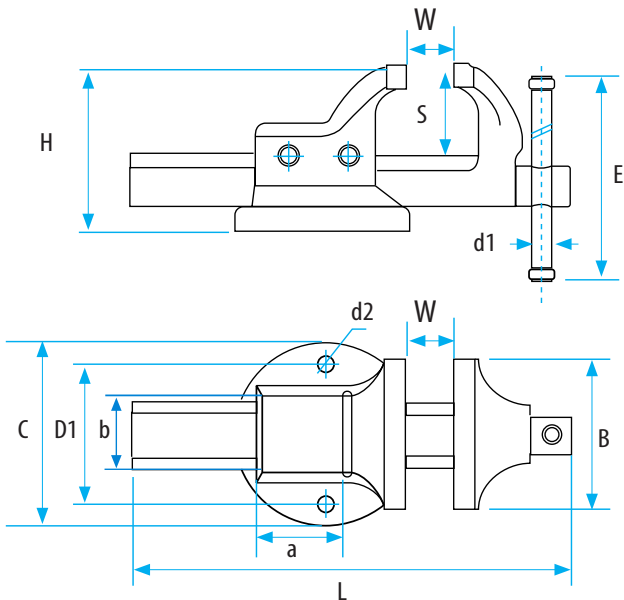
UNZERBRECHLICH



UNBREAKABLE

## KANEX Parallel Vice

All-steel, drop forged (CF45 Steel).  
 Jaws induction hardened (HRC 52-58).  
 Adjustable jaw alignment system guarantees precision clamping.  
 Sliding guides are protected against contamination.  
 All vices are equipped with fixtures for removable snap-on pipe jaws for various applications.  
 LONG TIME GUARANTEE

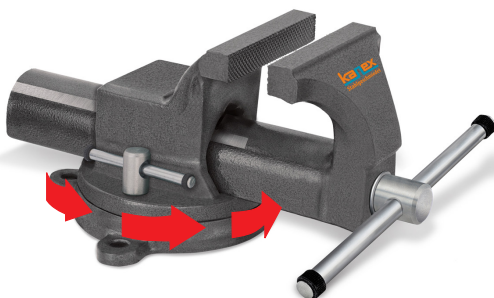
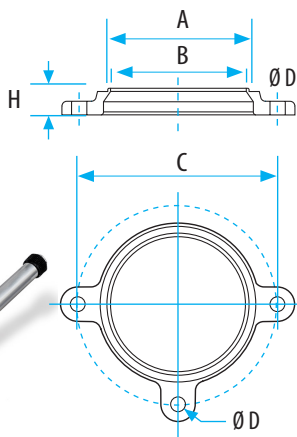


SIZE		KAN-125	KAN-150
Size		5"	6"
Jaw With	B (inch)	5"	6"
Jaw Opening	W (inch)	6"	7"
Total Length	L (inch)	13"	16.5"
Anvil Size	axb (inch)	1.5 x 2.5"	2 x 2.95"
Base Diameter	C (inch)	5.5"	6.5"
Distance	Ø D1 (inch)	4"	5"
Hole Diameter	Ø d2 (inch)	.5"	.6"
Screwhandle	Ø d1 (inch)	.5"	.5"
Jaw Depth	S (inch)	2.7"	3.6"
Vise Height	H (inch)	5"	6.5"
Handle Length	L (inch)	10.6"	12.2"
Weight	lbs.	19	37

## Swivel Base

Bench Vice With Swivel Base

Plastic Part	Size (inch)	A	B	C	H	D Ø	Ibs.	Metal Part
KANP-125	5"	4"	4"	6"	0.8"	.45"	1.7	KANS-125
KANP-150	6"	5"	5"	7"	0.9"	.5"	2.8	KANS-150



Plastic



Metal

Swivel Base: Drop forged, infinitely variable rotation between 0° and 360°. Position lockable by special bolt- screw arm. Suitable also for other brands.