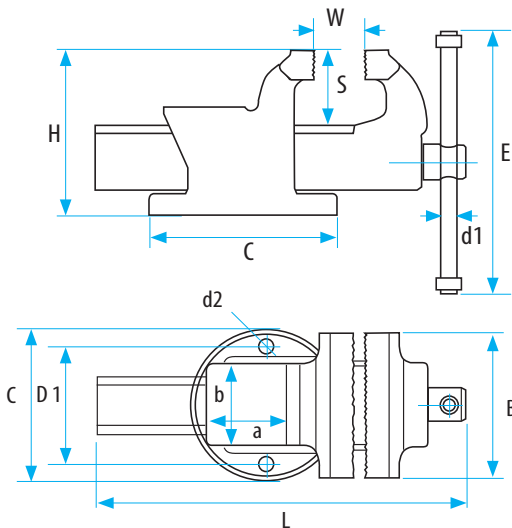




CASTILLO Vice / Sfero Casting

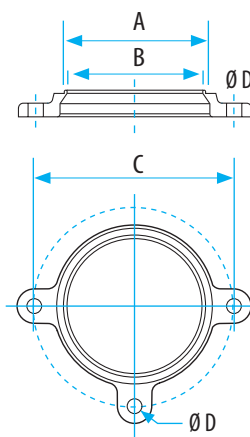
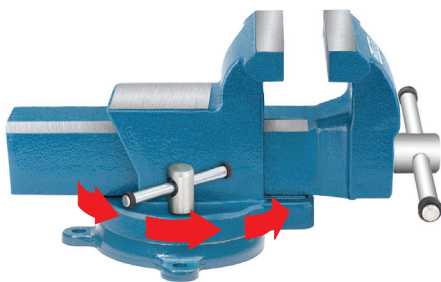
- Material made of impact resistant
- Ductile iron (high tensile strength)
- Jaws and Anvil induction hardened (50-58 HRC)
- More anvil area
- Replaceable Nut made of forged steel
- Extra large span



Code		60210300100	60210300125	60210300150	60210300200
Size		100	125	150	200
Jaw With	B mm	100	125	150	200
Jaw Opening	W mm	125	150	170	190
Total Length	L mm	299.5	331	388	424
Anvil Size	axb mm	60x64	69.5x71	95x91	98x98
Base Diameter	C mm	153	160	205	220
Hole Distance	D1 mm	92	102	137	145
Hole Diameter	d2 mm	11.5	13.5	16.5	15
Screwhandle	d1 mm	13	13	15	15
Screwhandle Length	E mm	190	230	270	310
Jaw Depth	S mm	57.5	64.5	74	81
Vise Height	H mm	126	142.5	174.5	179.5
Weight	kg	6.5	9.15	16	21.5

Swivel Base

Bench Vice With Swivel Base



Code	Size (mm)	A	B	C	Ø D	kg
66002150100	100	107	103	150	11.5	0.8
66002150125	125	121	115	165	13.5	1.3
66002150150	150	135	129	185	13.5	2.0
66002150200	200	167	160	220	13.5	2.6

Drop forged, infinitely variable rotation between 0° and 360°. Position lockable by special bolt- screw arm. Suitable also for other brands.