

DROP FORGED

FORTISSIMO FIX

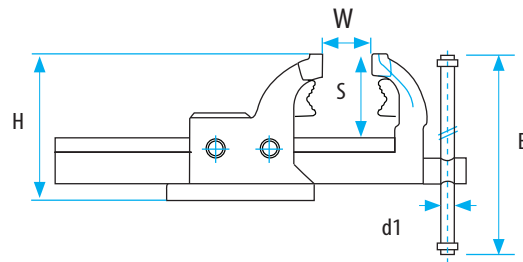
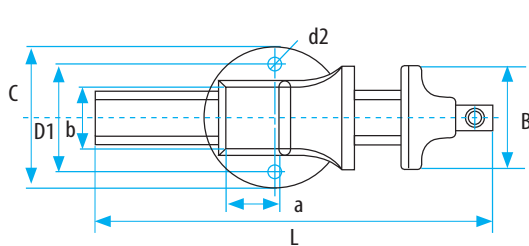
UNBREAKABLE

FORTISSIMO Plumber's Vice

All-steel, drop forged (CF45 Steel). Jaws and anvil induction hardened (HRC 52-58). Adjustable jaw alignment system guarantees precision clamping. Parallel vice with 2 welded jaws for clamping pipes guarantees precision parallel clamping. Available with jaw widths from 100 mm to 200 mm. (Other technical details like Parallel-Vice). **LONG TIME GUARANTEE**

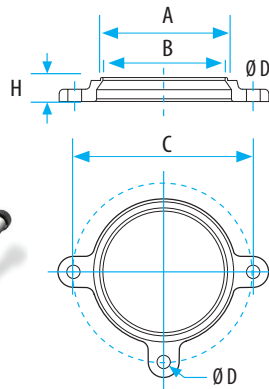
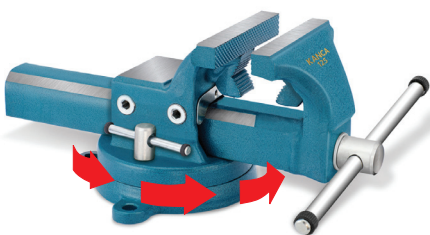


Code		60205020100	60205020115	60210020125	60205020135	60205020150	60205020175	60205020200
Size		100	115	125	135	150	175	200
Jaw With	B mm	100	115	125	135	150	175	200
Jaw Opening	W mm	125	140	160	170	190	205	205
Total Length	L mm	308	361.5	388	425	480	520	520
Anvil Size	axb mm	38x52	46x60	50x70	56x75	68x84	73x91	75x93
Base Diameter	C mm	120	134.6	150	159.6	179.6	209.6	209.6
Distance	D1 mm	92	102	113	120	137	166	166
Hole Diameter	d2 mm	11.5	13.5	13.5	16	16.5	17.5	17.5
Screwhandle	d1 mm	13	13	15	15	15	18	18
Handle Length	E mm	190	230	270	270	310	335	335
Jaw Depth	S mm	66	73.5	72.5	88	96	108.5	108.5
Vise Height	H mm	119	141	139.6	167	188	202.5	202.5
Weight	kg	5.2	7.8	9.3	14	18.5	25	26
Clamps pipes from		3/8	3/8	3/8	3/8	3/8	3/8	3/8
Clamps pipes to		1 1/4	1 1/2	1 1/2	1 1/2	2 1/2	3	3



Swivel Base

Bench Vice With Swivel Base



Code	Size (mm)	A	B	C	D Ø	kg	Code
66002010100	100	107	103	150	11.5	0.8	66002020100
66002010115	115	121	116	165	13.5	1.0	66002020115
66002010125	125	135	129	185	13.5	1.3	66002020125
66002010135	135	142	136	195	16	1.4	66002020135
66002010150	150	161	154	225	16	2.0	66002020150
66002010175	175	183	181	250	17.5	2.6	66002020175
66002010200	200	183	181	250	17.5	2.6	66002020200

Drop forged, infinitely variable rotation between 0° and 360°. Position lockable by special bolt-screw arm. Suitable also for other brands.

KANCA
DESIGN • FORGE • SAFETY