



## PRIMO Parallel Vice

All-steel, drop forged (CF45 Steel).  
With extra large anvil and higher jaws for an increased clamping volume.

Jaws and anvil induction hardened (HRC 52-58).

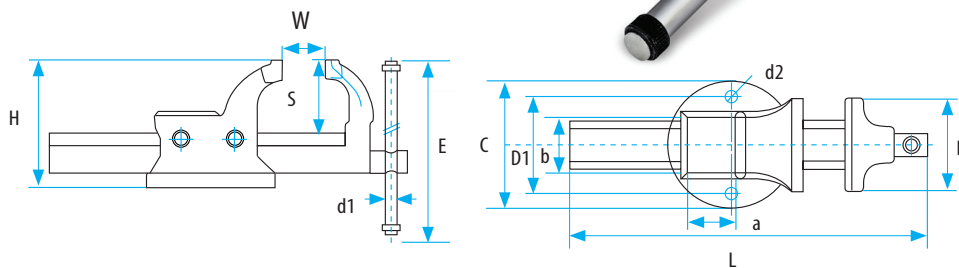
Rolled twin start Acme thread for precise operation.

Adjustable jaw alignment system guarantees precision clamping.

All vices are equipped with fixtures for removable snap-on pipe jaws for various applications.

### LONG TIME GUARANTEE

- With large anvil,  
With smooth jaw width,  
With increased clamping volume,  
Measuring scale

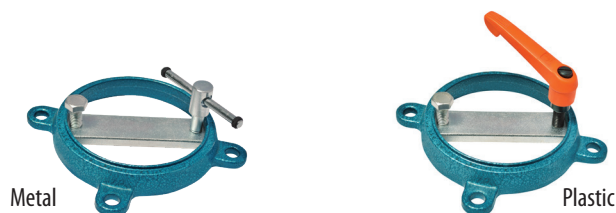
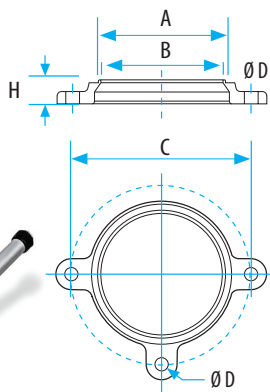
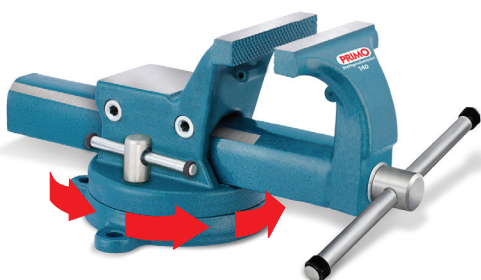


Code	60210010100	60210010120	60210010140	60210010160	60210010180	
Size	100	120	140	160	180	
Jaw With	B mm	100	120	140	160	180
Jaw Opening	W mm	125	150	200	225	225
Total Length	L mm	333	389	478.5	566	566
Anvil Size	axb mm	65x60	72x70	94x85	120x105	120x105
Base Diameter	C mm	120	150	183.2	210	210
Distance	D1 mm	92	113	145	166	166
Hole Diameter	d2 mm	11.5	13.5	15	17.5	17.5
Screwhandle	d1 mm	13	13	15	18	18
Screwhandle Length	E mm	190	230	310	335	335
Jaw Depth	S mm	68	83	96.3	118	118
Vise Height	H mm	121.5	150	176.3	207.5	207.5
Weight	kg	5.5	9.5	17	25	25
Clamps pipes from/to *1	(inch)	-	1/4"-3"	1/4"-5"	1/4"-6"	1/4"-6"

\*1) If pipe jaws required surcharge

## Swivel Base

### Bench Vice With Swivel Base



Code	Size (mm)	A	B	C	D Ø	kg	Code
66001010100	100	107	103	150	11.5	0.8	66001020100
66001010120	120	135	129	185	13.5	1.3	66001020120
66001010140	140	167	160	220	13.5	1.85	66001020140
66001010160	189	183	160	250	17.5	1.85	66001020160
66001010180	189	183	160	250	17.5	1.85	66001020180

Swivel Base: Drop forged, infinitely variable rotation between 0° and 360°. Position lockable by special bolt- screw arm. Suitable also for other brands.