



KADETT Plumber's Vice

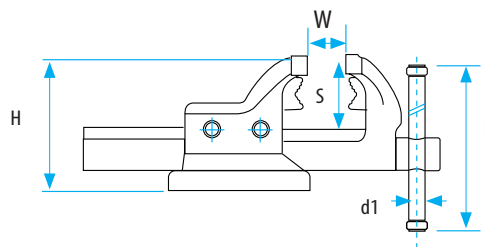
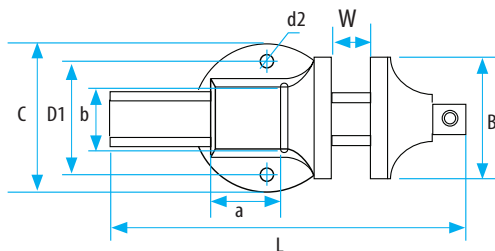
All-steel, drop forged (CF45 Steel).

Jaws and anvil induction hardened (HRC 52-58).

Adjustable jaw alignment system guarantees precision clamping.

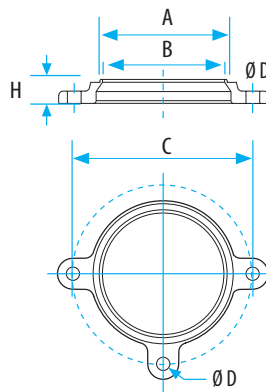
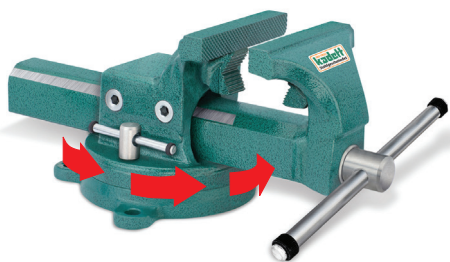
Parallel vice with 2 welded jaws for clamping pipes guarantees precision parallel clamping. **LONG TIME GUARANTEE**

Code		60205030100	60205030115	60210030125	60205030135	60205030150	60205030175	60205030200
Size		100	115	125	135	150	175	200
Jaw With	B mm	100	115	125	135	150	175	200
Jaw Opening	W mm	125	140	160	170	190	205	205
Total Length	L mm	308	361.5	388	425	480	520	520
Anvil Size	axb mm	38x52	46x60	50x70	56x75	68x84	73x91	75x93
Base Diameter	C mm	120	135	150	160	180	210	210
Distance	D1 mm	92	102	113	120	137	166	166
Hole Diameter	d2 mm	11.5	13.5	13.5	16	16.5	17.5	17.5
Screwhandle	d1 mm	13	13	15	15	15	18	18
Handle Length	E mm	190	230	270	270	310	335	335
Jaw Depth	S mm	66	73.5	72.5	88	96	108.5	108.5
Vise Height	H mm	119	141	140	167	188	202.5	202.5
Weight	kg	5.2	7.8	9.3	14	18.5	25	26
Clamps pipes from	(inch)	3/8"	3/8"	3/8"	3/8"	3/8"	3/8"	3/8"
Clamps pipes to	(inch)	1 1/4"	1 1/2"	1 1/2"	1 1/2"	2 1/2"	3	3



Swivel Base

Bench Vice With Swivel Base



Code	Size (mm)	A	B	C	D Ø	kg
66003010100	100	107	103	150	11.5	0.8
66003010115	115	121	116	165	13.5	1.0
66003010125	125	135	129	185	13.5	1.3
66003010135	135	142	136	195	16	1.4
66003010150	150	161	154	225	16	2.0
66003010175	175	189	183	250	17.5	2.6
66003010200	200	189	183	250	17.5	2.6



Drop forged, infinitely variable rotation between 0° and 360°. Position lockable by special bolt-screw arm. Suitable also for other brands.